

TIN WHISTLE AIDS & ACTIVITIES

Instructions:

Use these for worksheets, visual aids, games, etc.

I used these during weeks 9, 10, and 11 of tin whistle.

For more details about how I used these specifically please see my YouTube videos for each week

[Week 9](#)

[Week 10](#)

[Week 11](#)

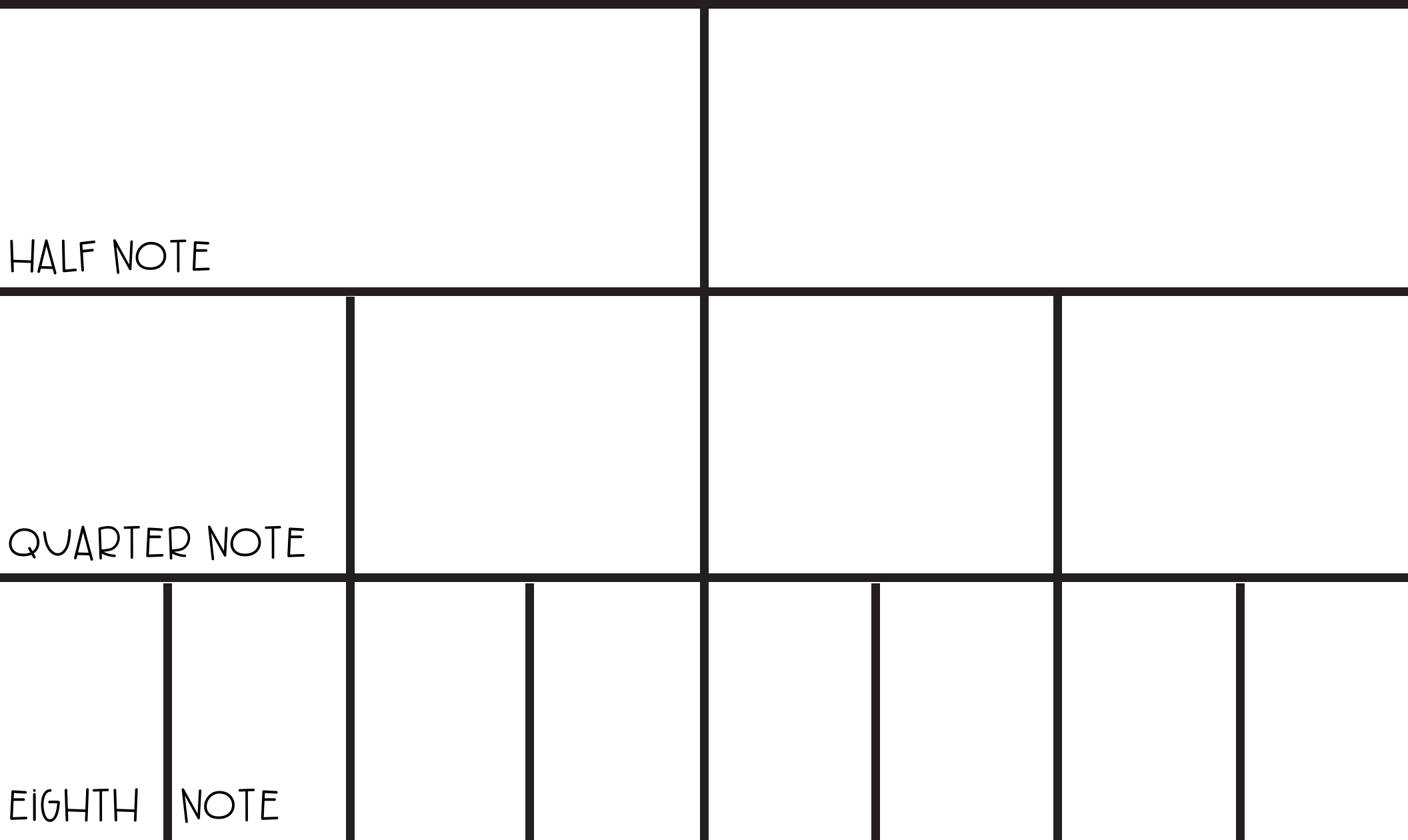
created by Caitlin King - mychocolatemoments.com

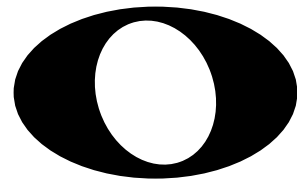
WHOLE NOTE

HALF NOTE

QUARTER NOTE

EIGHTH NOTE

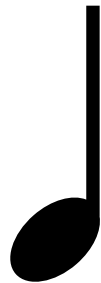




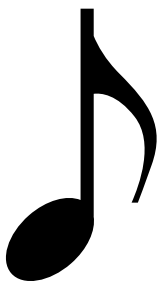
WHOLE NOTE



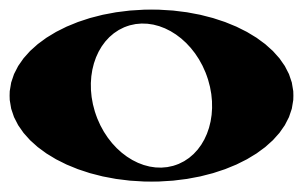
HALF NOTE



QUARTER NOTE



EIGHTH NOTE



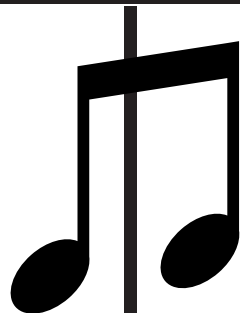
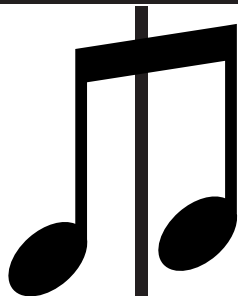
WHOLE NOTE



HALF NOTE



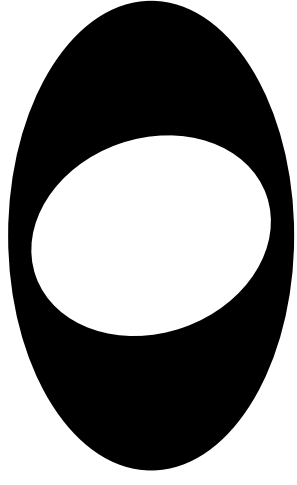
QUARTER NOTE



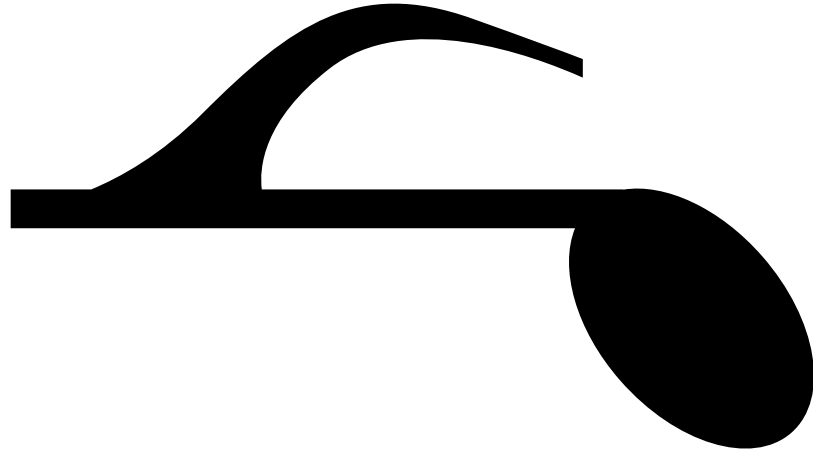
EIGHTH NOTE



QUARTER NOTE



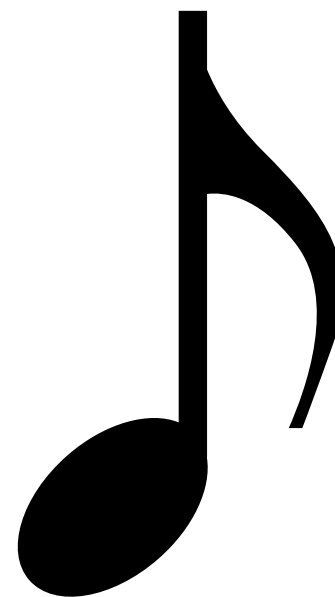
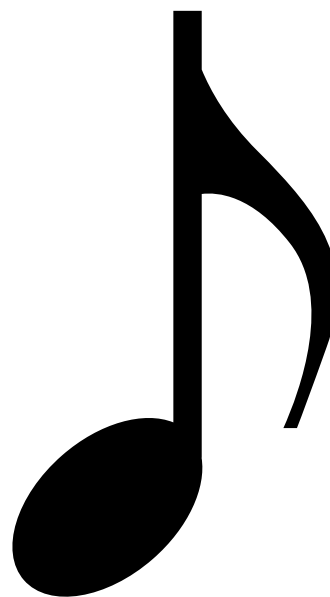
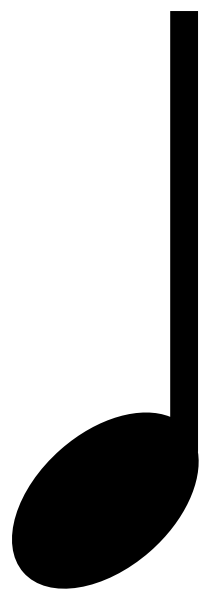
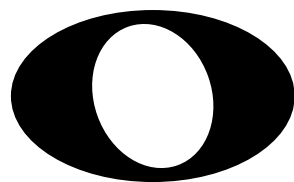
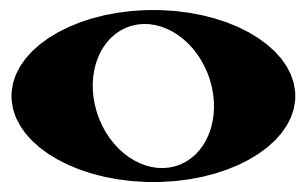
WHOLE NOTE

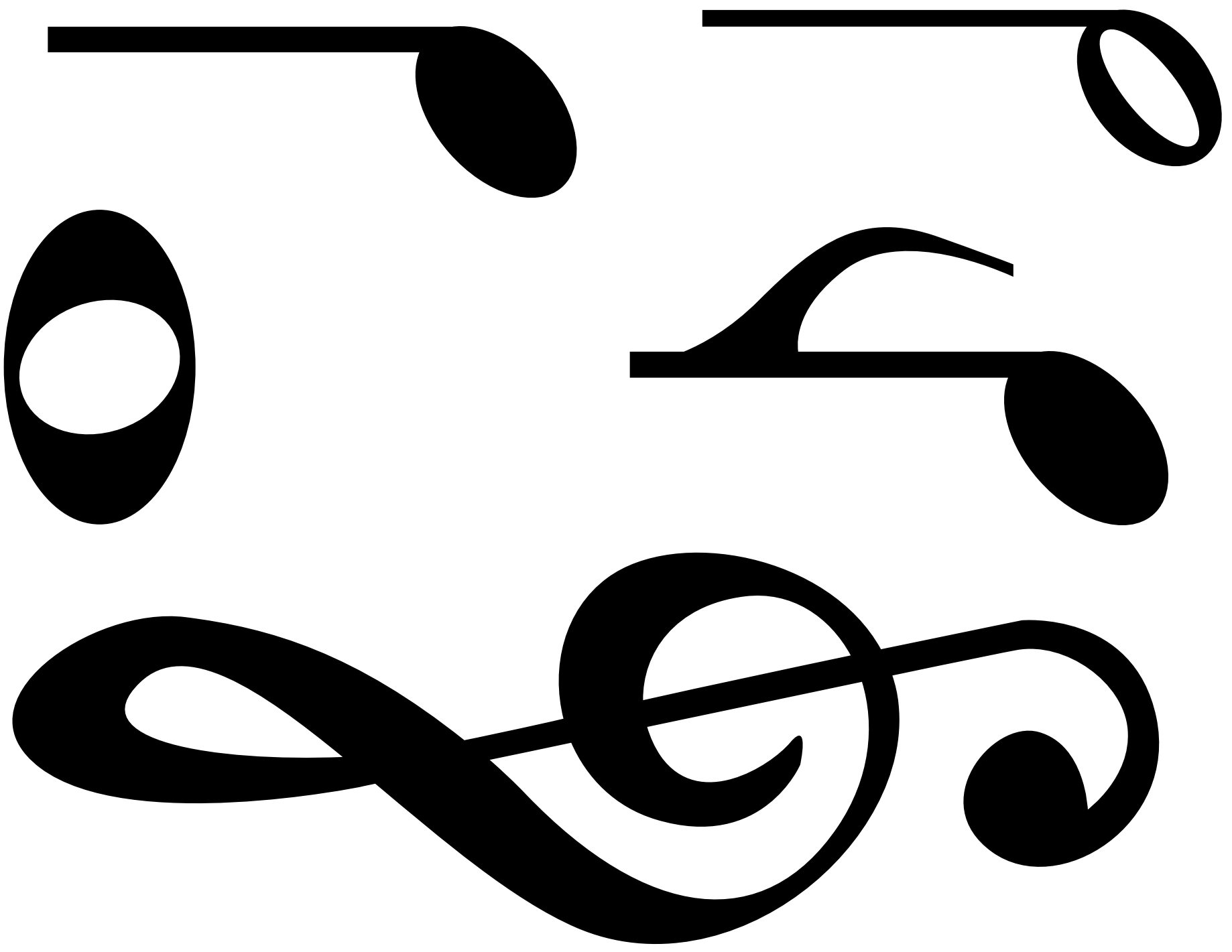


EIGHTH NOTE



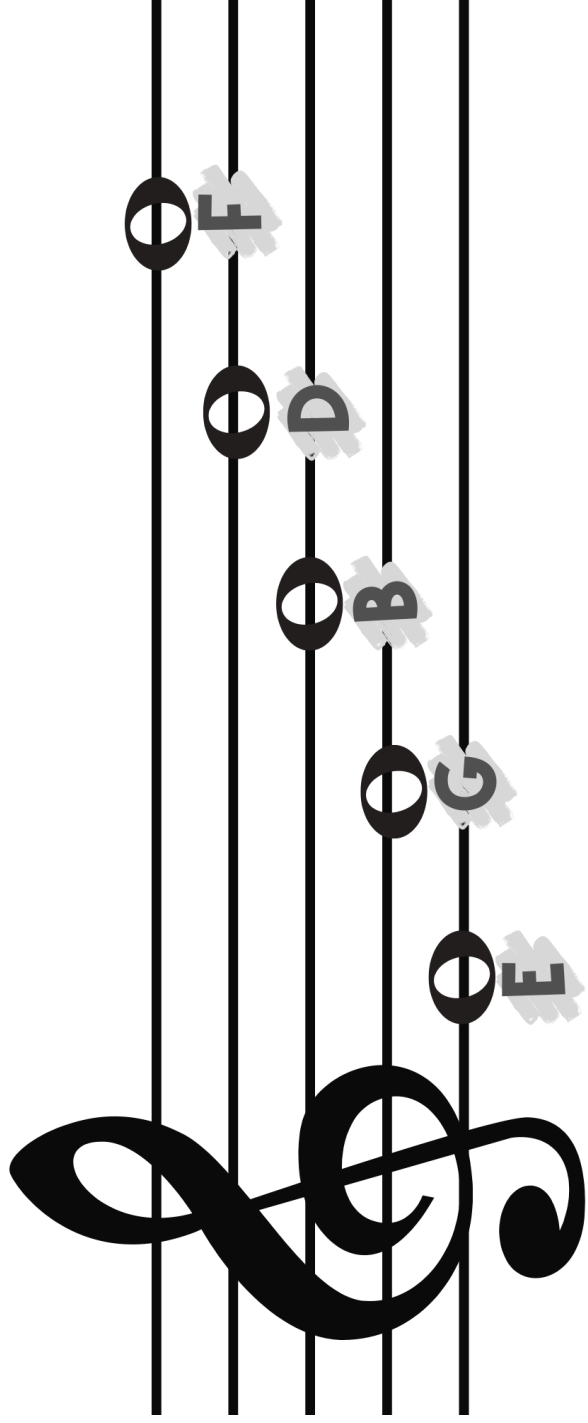
HALF NOTE





WHEN A NOTE IS ON A LINE

EVERY **G**OOD **B**OY **D**OES **F**INE



WHEN A NOTE IS ON A SPACE

IT SPELLS THE WORD **F**ACE

